



Kemuel Marcus
067 045 0431
kemuel@ingwe.co.za

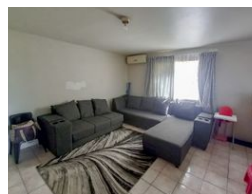
Contact Umhlanga

031 7019898


Ridge 6
20 Ncondo Place
Umhlanga Ridge
Umhlanga



Web Ref RL5652



R980,000

 4  2

Monthly Bond Repayment R9,949.24

Calculated over 20 years at 10.75% with no deposit.

Transfer Costs R30,412.00 **Bond Costs** R23,335.00

These calculations are only a guide. Please ask your conveyancer for exact calculations.

Monthly Rates R1,020

Ideal investment opportunity

Nestled in the sought-after area of Lenham, this charming 4-bedroom home offers incredible versatility and an abundance of potential.

Perfectly suited for a large family or as an investment property, this home is divided into two self-contained units, allowing for both privacy and convenience.

The upstairs unit boasts two comfortable bedrooms, a spacious lounge perfect for relaxing or entertaining, a well-equipped kitchen, and a neat bathroom.

Downstairs, the second unit mirrors the upstairs layout, with two additional bedrooms, a functional kitchen, and another modern bathroom, ensuring ample space and comfort for everyone.

The property also features parking for two cars, adding to its practicality. Conveniently located close to local amenities, schools, and transport routes, it offers everything you need for daily...

Features

Pets Allowed Yes

Interior

Bedrooms	4
Bathrooms	2
Kitchens	2
Recep. Rooms	2
Furnished	No

Exterior

Carports / Parkings	2
Security	No
Pool	No
Views	True

Sizes

Land Size	197m ²
-----------	-------------------