

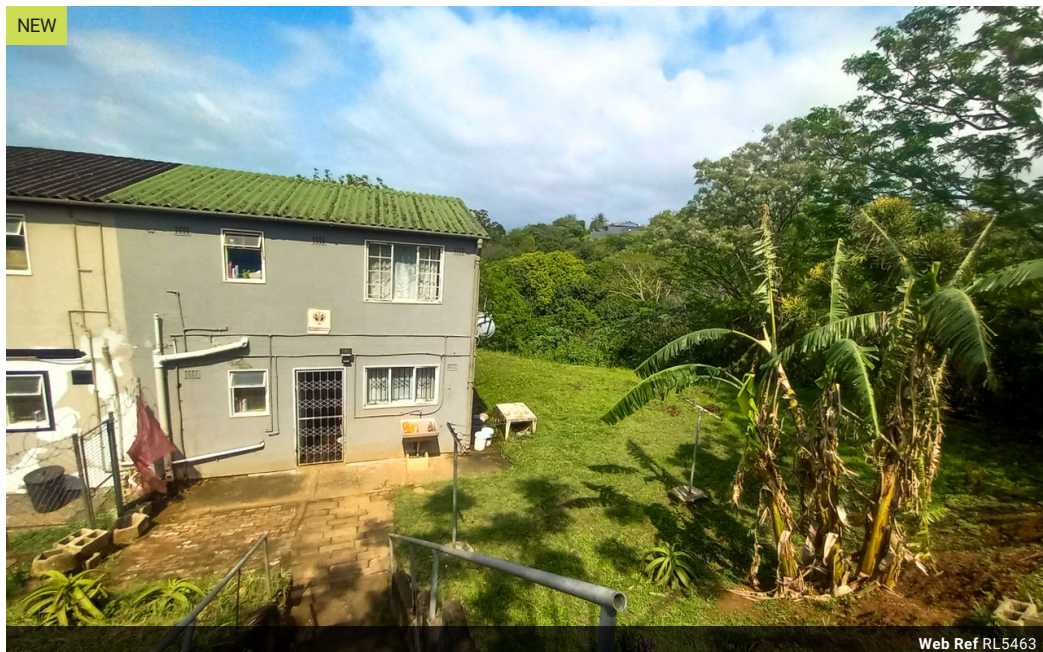


Kemuel Marcus
067 045 0431
kemuel@ingwe.co.za

Contact Umhlanga
031 7019898

Ridge 6
20 Ncondo Place
Umhlanga Ridge
Umhlanga

NEW



Web Ref RL5463



R5,800 pm

 3  2

Lease Period 12 months
Annual Escalation 10 %
Lease Excludes:
lights & water

Availability Immediately **Deposit** R6,000

Affordable Pet friendly home

This home is situated in the heart of Greenbury and is in walking distance to public transport routes and major amenities.

The home contains :
Three bedrooms
Full family bathroom
Guest toilet
Spacious open plan lounge and dining room
Fully fitted kitchen

Call today for a viewing.

Features

Pets Allowed		Yes			
Interior		Exterior		Sizes	
Bedrooms	3	Security	No	Land Size	293m²
Bathrooms	2	Pool	No		
Kitchens	1	Views	True		
Recep. Rooms	1				
Furnished	No				