



Sibusiso Dlamini
0762032030
sibusiso@ingwe.co.za

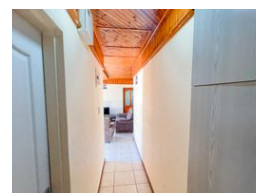
Contact Head Office

031 701 9898

34 Glenugie Road
Pinetown
3610



Web Ref RL5737



R8,500 pm

Monthly Rates R975.9

Lease Period 12 months

Availability Immediately

Deposit R8,500

Annual Escalation -

Lease Excludes:
Lights and Water

3 1.5 1

Spacious home for you and your Family.

Situated in a quiet and family-friendly pocket of Lupin Lane Wyebank, this beautifully maintained freestanding home is the perfect blend of comfort, space, and privacy. Ideal for a young family or professional couple, the property offers a welcoming environment with all the essentials for relaxed living.

Step inside and discover three generously sized bedrooms, each offering ample natural light and built-in storage. The main bedroom is complete with a private ensuite bathroom, while the remaining rooms are serviced by a well-appointed family bathroom featuring both a bath and a shower, as well as a separate guest toilet for added convenience.

The heart of the home is a neat and functional kitchen, ideal for home cooking and easy entertaining. Adjacent to the kitchen is a warm and inviting lounge area, perfect for unwinding...

Features

Pets Allowed Yes

Interior

Bedrooms	3
Bathrooms	1.5
Kitchens	1
Recep. Rooms	2
Furnished	No

Exterior

Garages	1
Security	Yes
Pool	No
Views	True

Sizes

Land Size	1,023m²
-----------	---------

