



Gloria Naidoo
 0844466063
 gloria@ingwe.co.za

Contact Umhlanga

031 7019898

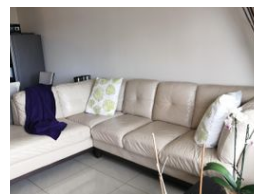
Ridge 6
 20 Ncondo Place
 Umhlanga Ridge
 Umhlanga

3 Bedroom Apartment For Sale in Umhlanga Ridge



SOLE MANDATE

Web Ref RL4655



R2,195,000

3 Bedrooms 2 Bathrooms 2 Carports

Monthly Bond Repayment R22,284.28

Calculated over 20 years at 10.75% with no deposit.

Transfer Costs R89,647.00 **Bond Costs** R34,625.00

These calculations are only a guide. Please ask your conveyancer for exact calculations.

Monthly Levy R3,221 **Monthly Rates** R1,411

INVESTMENT OPPORTUNITY - NEW ON THE MARKET

NEW SOLE MANDATE - JUST LISTED BY INGWE PROPERTY GROUP

Location !!! Sea Views !!!

Lifts are operational during load shedding due to the generator !!

Priced right !! Great opportunity to purchase a property with excellent return on investment.

A recently upgraded, bright, airy and spacious open plan apartment, that flows onto a large balcony with unobstructed sea views.

This complex is situated in the heart of the city, within walking distance to the vibrant Gateway Theatre of Shopping, and close to all amenities.

Also on your doorstep is the Chris Saunders park, Umhlanga and Gateway hospitals.

With easy access to all major routes / freeways, King Shaka International airport, and just a short drive to the Umhlanga beach and promenade.

Features

Interior

Bedrooms	3
Bathrooms	2
Kitchens	1
Recep. Rooms	2
Furnished	No

Exterior

Garages	2
Security	Yes
Pool	No
Views	False

Sizes

Floor Size	120m²
------------	-------

