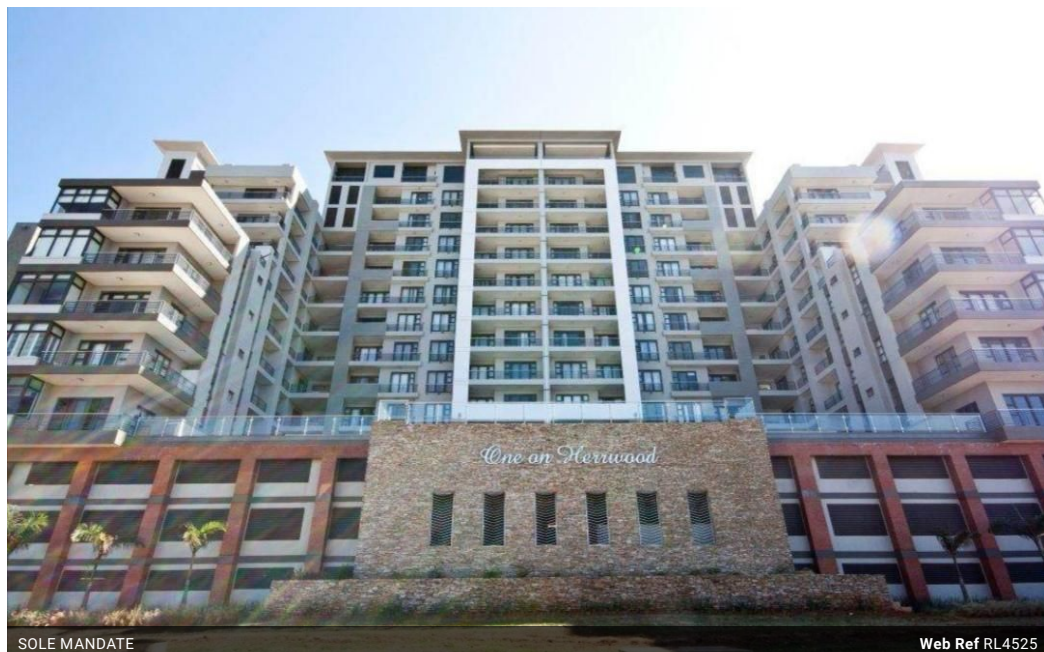




Gloria Naidoo
0844466063
gloria@ingwe.co.za

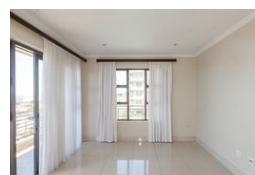
Contact Umhlanga
031 7019898

Ridge 6
20 Ncondo Place
Umhlanga Ridge
Umhlanga



SOLE MANDATE

Web Ref RL4525



R2,950,000

3 Bedrooms 2 Bathrooms 2 Carports

Monthly Bond Repayment R29,949.25

Calculated over 20 years at 10.75% with no deposit.

Transfer Costs R156,055.00 **Bond Costs** R42,185.00

These calculations are only a guide. Please ask your conveyancer for exact calculations.

Monthly Levy R4,370 **Monthly Rates** R3,630

MAJESTIC and UPMARKET - SEA VIEWS APARTMENT

NEW SOLE MANDATE

JUST LISTED - PRESTIGIOUS 'ONE ON HERRWOOD'

Ingwe Property Group is delighted to present this well priced new sole mandate.

A Stunning, open plan and well-appointed apartment, located in a prestigious complex with spectacular sea views.

An amazing and luxurious unit with modern finishes throughout.

Comfortable and secure living with the convenience of being close to the hospital, malls, schools and beach.

Large 'L' shaped balcony with uninterrupted sea views, from both inside and the balcony.

A lifestyle of convenience, peace and tranquility.

A lovely entrance reception / foyer leads onto the large pool with breath taking fabulous rim flow pool set on a large deck overlooking the Umhlanga Rocks skyline and the Indian Ocean.

Features

Interior

Bedrooms	3
Bathrooms	2
Kitchens	1
Recep. Rooms	2
Furnished	No

Exterior

Garages	2
Security	Yes
Pool	Yes
Views	True

Sizes

Floor Size	122m²
------------	-------

