



Gloria Naidoo
0844466063
gloria@ingwe.co.za

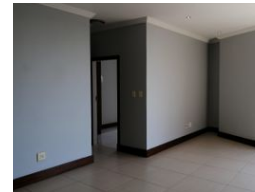
Contact Umhlanga
031 7019898

Ridge 6
20 Ncondo Place
Umhlanga Ridge
Umhlanga



SOLE MANDATE

Web Ref RL4467



R1,495,000

Monthly Bond Repayment R15,177.67

Calculated over 20 years at 10.75% with no deposit.

Transfer Costs R45,635.00 **Bond Costs** R28,990.00

These calculations are only a guide. Please ask your conveyancer for exact calculations.

 2  2  1

REDUCED - SOLE MANDATE - UMHLANGA RIDGE

LOCATION !!! LOCATION !!!

Further reduction - priced to sell !!!

Conveniently situated close to The Crescent and Gateway Mall is this extra large, bright and modern apartment in the heart of the ever vibrant New Town Centre.

Stunning, open plan apartment, large living area flows onto a circular balcony with stunning views over Umhlanga.

The complex has a roof top communal entertainment area, pool and braai facilities, with change rooms and showers.

A lock-up and go lifestyle, safe and secure, with easy access to the Gateway mall, The Crescent, Cornubia Mall, King Shaka International Airport.

2bed 2bathrooms one basement parking.

Excellent 24 hour manned security.

Features

Interior

Bedrooms	2
Bathrooms	2
Kitchens	1
Recep. Rooms	2
Furnished	No

Exterior

Garages	1
Security	Yes
Pool	Yes
Views	False

Sizes

Floor Size	98m ²
------------	------------------

