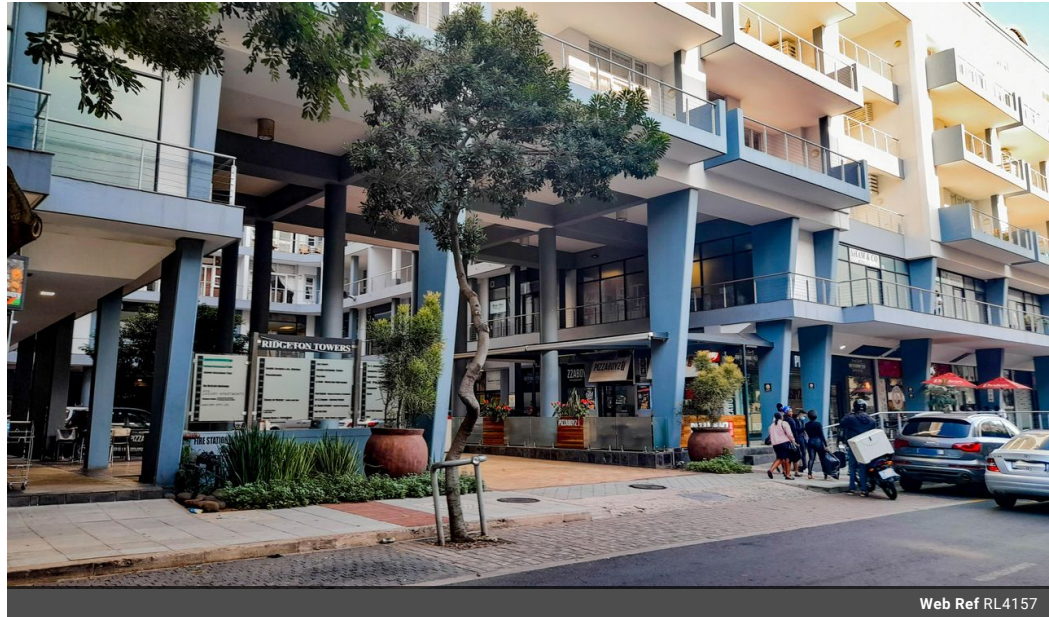




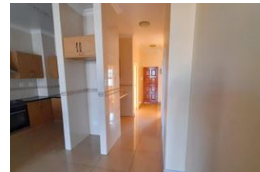
Gloria Naidoo
0844466063
gloria@ingwe.co.za

Contact Umhlanga
031 7019898

Ridge 6
20 Ncondo Place
Umhlanga Ridge
Umhlanga



Web Ref RL4157



R2,495,000

 3  2

Monthly Bond Repayment R25,329.96

Calculated over 20 years at 10.75% with no deposit.

Transfer Costs R115,320.00 **Bond Costs** R38,415.00

These calculations are only a guide. Please ask your conveyancer for exact calculations.

Monthly Levy R2,500 **Monthly Rates** R1,700

JUST LISTED - GATEWAY 3 BED

Ridgeton Towers offers value, vibes, and views on the doorstep of Gateway. Experience secure, piazza-style living, right where you need to be.

It's close to everything and offers a large 3 bedroom, 2 bathroom apartment with spacious living and expansive views.

A large modern fitted kitchen and breakfast counter separates the lounge area which flows into a large balcony through sliding doors. Entertain guests and braai while catching ocean views and the Umhlanga Ridge skyline.

A full family bathroom offers both a tub and shower to service the 2 fitted bedrooms while the 3rd bedroom is fitted with a walk-in closet area that leads into a full en-suite, again fitted with a shower and bathtub.

Plus enjoy a morning coffee on the bedroom balcony overlooking the Gateway and Umhlanga scenery. This newly renovated...

Features

Interior

Bedrooms	3
Bathrooms	2
Kitchens	1
Recep. Rooms	2
Furnished	No

Exterior

Carports / Parkings	2
Security	Yes
Pool	Yes
Views	True

Sizes

Floor Size	119m ²
------------	-------------------

