



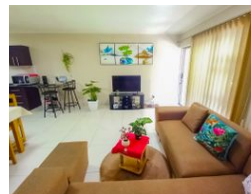
**Kemuel Marcus**  
067 045 0431  
kemuel@ingwe.co.za

Contact Umhlanga  
**031 7019898**


Ridge 6  
20 Ncondo Place  
Umhlanga Ridge  
Umhlanga



Web Ref RL5604



**R1,250,000**

 1  1

**Monthly Bond Repayment** R12,690.36

Calculated over 20 years at 10.75% with no deposit.

**Transfer Costs** R36,117.00 **Bond Costs** R27,105.00

These calculations are only a guide. Please ask your conveyancer for exact calculations.

**Monthly Levy** R2,000 **Monthly Rates** R800

## Luxurious Townhouse with High-End Amenities

This one bedroom apartment is situated in an exclusive, much sought after, upmarket area in Umhlanga. It is on the doorstep of the well known, bustling Gateway Shopping Complex. This means that there is constant and easy access to amazing food, gyms, parks, health care facilities and incredible night life .

The home consists of a fully fitted kitchen ,open plan lounge and dining room. The one bedroom is fitted with built in cupboards and the apartment has its own private balcony on which you may enjoy endless private and relaxing evenings.

Call me today for an exclusive viewing.

## Features

### Interior

Bedrooms	1
Bathrooms	1
Kitchens	1
Recep. Rooms	1
Furnished	No

### Exterior

Carports / Parkings	1
Security	Yes
Pool	No
Views	True

### Sizes

Floor Size	58m <sup>2</sup>
Land Size	1,948m <sup>2</sup>