



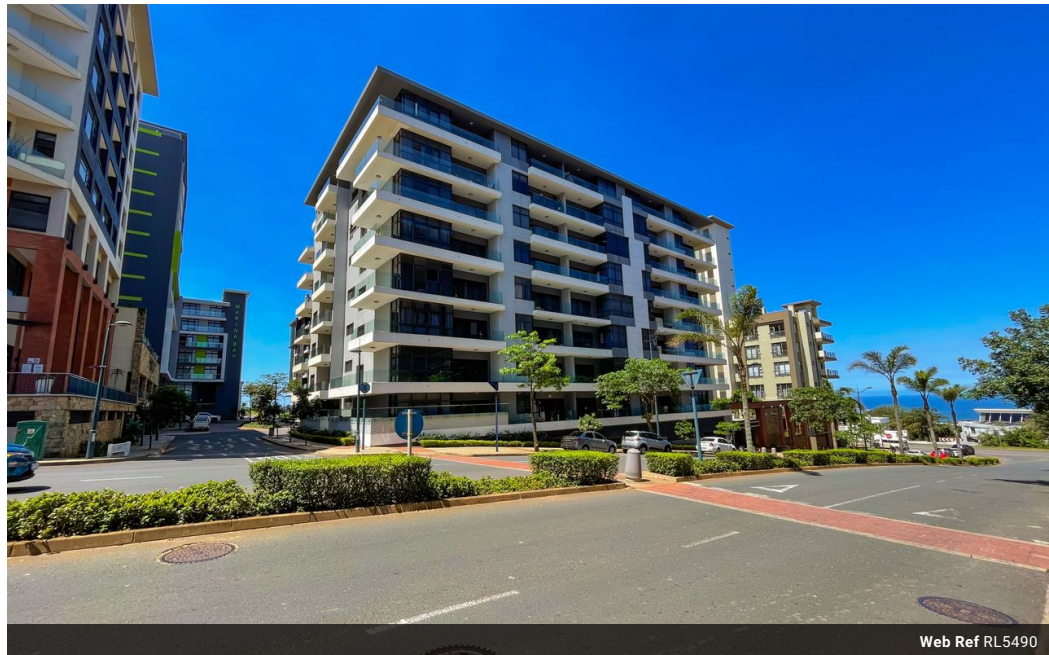
Valerie Naidoo
084 507 3082
valerie@ingwe.co.za



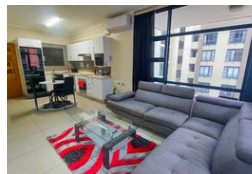
Noeleen Naidoo
082 828 2895
noeleen@ingwe.co.za

Contact Umhlanga
031 7019898

Ridge 6
20 Ncondo Place
Umhlanga Ridge
Umhlanga



Web Ref RL5490



R2,890,000

 2
  2
  1

Monthly Bond Repayment R29,340.12

Calculated over 20 years at 10.75% with no deposit.

Transfer Costs R151,255.00 **Bond Costs** R42,185.00

These calculations are only a guide. Please ask your conveyancer for exact calculations.

Monthly Levy R2,221 **Monthly Rates** R2,193

EXCELLENT SEA VIEWS MODERN DESIGNED APARTMENT IN A PRIME LOCATION OF UMHLANGA

This 2-bedroom residence offers a perfect blend of comfort, style and serenity.

Features a bright and spacious open plan kitchen and lounge

Bedrooms with ample storage space

Granite kitchen tops and ample counter space

Modern bathroom with tiled flooring

A sparkling heated pool

A private gym and relaxing areas are part of the perks of owning this amazing apartment
Potential income generator as air Bnb

Prime location close to local amenities, schools and transportation

Features

Pets Allowed		Exterior		Sizes	
Yes					
Interior		Garages	1	Land Size	1,821m ²
Bedrooms	2	Carports / Parkings	1		
Bathrooms	2	Security	Yes		
Kitchens	1	Pool	Yes		
Recep. Rooms	2	Views	False		
Furnished	No				