



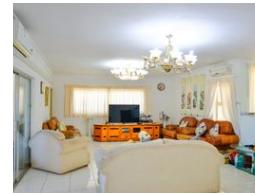
Sugan Naidu
071 167 4113
sugan@ingwe.co.za

Contact Umhlanga
031 7019898

Ridge 6
20 Ncondo Place
Umhlanga Ridge
Umhlanga



Web Ref RL5625



R4,699,000

🛏 5 🚿 4 🚗 2

Monthly Bond Repayment R47,705.61

Calculated over 20 years at 10.75% with no deposit.

Transfer Costs R367,067.00 **Bond Costs** R59,150.00

These calculations are only a guide. Please ask your conveyancer for exact calculations.

Monthly Rates R5,880

Stunning sea views

This opulent 5-bedroom residence in the center of La Lucia showcases stunning sea views from all rooms, merging sophistication, spaciousness, and comfort. Crafted for families and entertainers alike, it features large open-plan living areas that transition effortlessly onto a glass-enclosed balcony, ideal for savoring panoramic ocean views.

The property includes a designated study, a vibrant garden perfect for children and pets, and a sizable swimming pool with a paved braai area for entertaining guests. Three of the five generous bedrooms feature en-suite bathrooms, providing privacy and ease. A double garage offers direct entry into the residence, with plenty of off-street parking available. Additional features comprise staff quarters with a private bathroom, a separate laundry area, and two reinforced private balconies...

Features

Pets Allowed Yes

Interior

Bedrooms	5
Bathrooms	4
Kitchens	1
Recep. Rooms	2
Furnished	No

Exterior

Garages	2
Security	No
Dom. Accom.	1
Pool	Yes
Views	True

Sizes

Floor Size	215m ²
Land Size	1,519m ²

