



Kemuel Marcus
067 045 0431
kemuel@ingwe.co.za

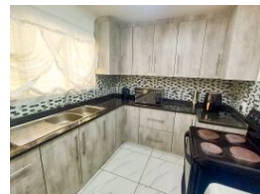
Contact Umhlanga
031 7019898

Ridge 6
20 Ncondo Place
Umhlanga Ridge
Umhlanga



SOLE MANDATE

Web Ref RL5521



R1,160,000

Monthly Bond Repayment R11,776.66

Calculated over 20 years at 10.75% with no deposit.

Transfer Costs R32,749.00 **Bond Costs** R25,220.00

These calculations are only a guide. Please ask your conveyancer for exact calculations.

 2  3

ENORMOUS DEVELOPMENT POTENTIAL

Set on an expansive 2,023 sqm of land, this home offers incredible potential for development, making it a perfect choice for investors or those looking to expand.

The charming 2-bedroom, 2-bathroom home is designed for modern living, featuring a spacious kitchen with contemporary finishes, ideal for both functionality and style. The main bedroom includes an ensuite, while the second bathroom has been beautifully updated with modern fixtures and fittings.

The expansive land provides dual road frontages, enhancing access and opening up multiple possibilities for future growth or subdivision. With its size, location, and potential for development, this is an exceptional opportunity for those looking to capitalize on a highly sought-after area.

Whether you're looking to build your dream home, develop residential units, or explore...

Features

Pets Allowed	Yes				
Interior		Exterior		Sizes	
Bedrooms	2	Carports / Parkings	30	Land Size	2,023m²
Bathrooms	3	Security	Yes		
Kitchens	1	Pool	No		
Recep. Rooms	1	Views	True		
Furnished	No				