



**Stanley Jili**  
083 615 0450  
stanley@ingwe.co.za

Contact Head Office

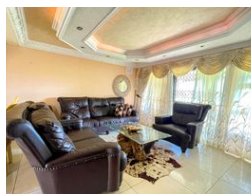
031 701 9898

34 Glenugie Road  
Pinetown  
3610



SOLE MANDATE

Web Ref RL5618



**R1,395,000**

3 2 2

**Monthly Bond Repayment** R14,162.44

Calculated over 20 years at 10.75% with no deposit.

**Transfer Costs** R40,467.00 **Bond Costs** R27,105.00

These calculations are only a guide. Please ask your conveyancer for exact calculations.

**Monthly Rates** R837

## A Dream Home

Welcome to this charming and spacious 3-bedroom home, perfectly designed for comfortable family living.

The property boasts a beautifully combined lounge and dining area. The fully fitted kitchen comes complete with modern cupboards and stove.

The main bedroom is a true retreat, featuring built-in wardrobes and a private ensuite. The two additional bedrooms are well-sized, offering plenty of space for family members. A family bathroom is fitted with a bathtub.

Adding even more value to this property is the 1-bedroom cottage that can be used for rental to subsidize the bond.

The home also comes with a double garage, ensuring secure parking and extra storage space. This property is in close proximity to Pick n Pay Shopping Centre and Medical Centre.

For viewing appointment contact Stanley Jili.

## Features

<b>Pets Allowed</b>	Yes			
<b>Interior</b>		<b>Exterior</b>		<b>Sizes</b>
Bedrooms	3	Garages	2	Land Size
Bathrooms	2	Security	Yes	1,072m²
Kitchens	1	Pool	No	
Recep. Rooms	2	Views	True	
Furnished	No			

