



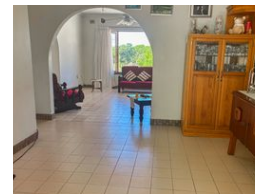
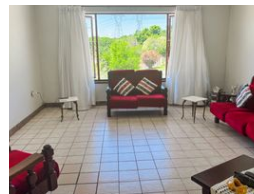
Stanley Jili
083 615 0450
stanley@ingwe.co.za

Contact Head Office
031 701 9898

34 Glenugie Road
Pinetown
3610



Web Ref RL5608



R1,200,000

3 2 2

Monthly Bond Repayment R12,182.75

Calculated over 20 years at 10.75% with no deposit.

Transfer Costs R32,749.00 **Bond Costs** R25,220.00

These calculations are only a guide. Please ask your conveyancer for exact calculations.

Monthly Rates R1,165

A Home in Perfect Condition

Step into comfort and convenience with this inviting 3-bedroom family home.

As you enter, you're greeted by a spacious lounge, dining room is positioned opposite the lounge.

The kitchen is fitted with cupboards.

Each of the Three bedrooms is fitted with built-in cupboards, ensuring plenty of space to keep everything organized. The main bedroom boasts an ensuite and there is an extra bathroom that's comes with bathtub and shower for other family members.

This property comes with a double garage, a carport, an outside toilet and a JoJo tank

The property is in close proximity to Pick n Pay shopping centre and medical centre.

Don't miss out on this wonderful opportunity to own your dream home.

For viewing appointment contact Stanley Jili

Features

Pets Allowed		Yes			
Interior				Exterior	
Bedrooms	3			Garages	2
Bathrooms	2			Carports / Parkings	2
Kitchens	1			Security	Yes
Recep. Rooms	2			Pool	No
Furnished	No			Views	True
				Sizes	
				Land Size	958m²