



Siva Naidoo
0828511210
siva@ingwe.co.za



Bonga Phillimon Mngadi
079 451 9733
bonga@ingwe.co.za

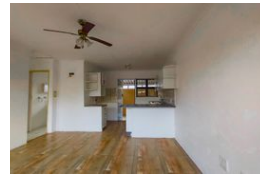
Contact Head Office

031 701 9898

34 Glenugie Road
Pinetown
3610



Web Ref RL5815



R1,150,000

2 1

Monthly Bond Repayment R11,481.37

Calculated over 20 years at 10.5% with no deposit.

Transfer Costs R32,851.00 **Bond Costs** R25,220.00

These calculations are only a guide. Please ask your conveyancer for exact calculations.

Monthly Levy R2,500 **Monthly Rates** R960

Move in Ready Lockup and Go Simplex

Move in Ready Corner Simplex Spacious Garden, Large Storage Room & Enclosed Laundry/Scullery

Step into comfort and convenience with this immaculate 2 bedroom lock-up-and-go simplex, perfectly positioned as a corner unit for added privacy and natural light. The generous wraparound garden is a rare find, ideal for children, pets, or simply enjoying outdoor living in your own private space.

Inside, the home is light, bright, and inviting, offering an open-plan flow that's both practical and welcoming. The enclosed laundry/scullery keeps your main living area uncluttered while adding extra storage and functionality.

Whether you're a first-time buyer, downsizing, or looking for a secure investment, this home ticks all the boxes:

- Move in ready, no work required
- Low maintenance lock up and go lifestyle
- Excellent security...

Features

Pets Allowed		Yes	
Interior		Exterior	
Bedrooms	2	Carports / Parkings	1
Bathrooms	1	Security	Yes
Kitchens	1	Pool	No
Recep. Rooms	2	Views	False
Furnished	No		
		Sizes	
		Floor Size	60m²
		Land Size	46,007m²

