

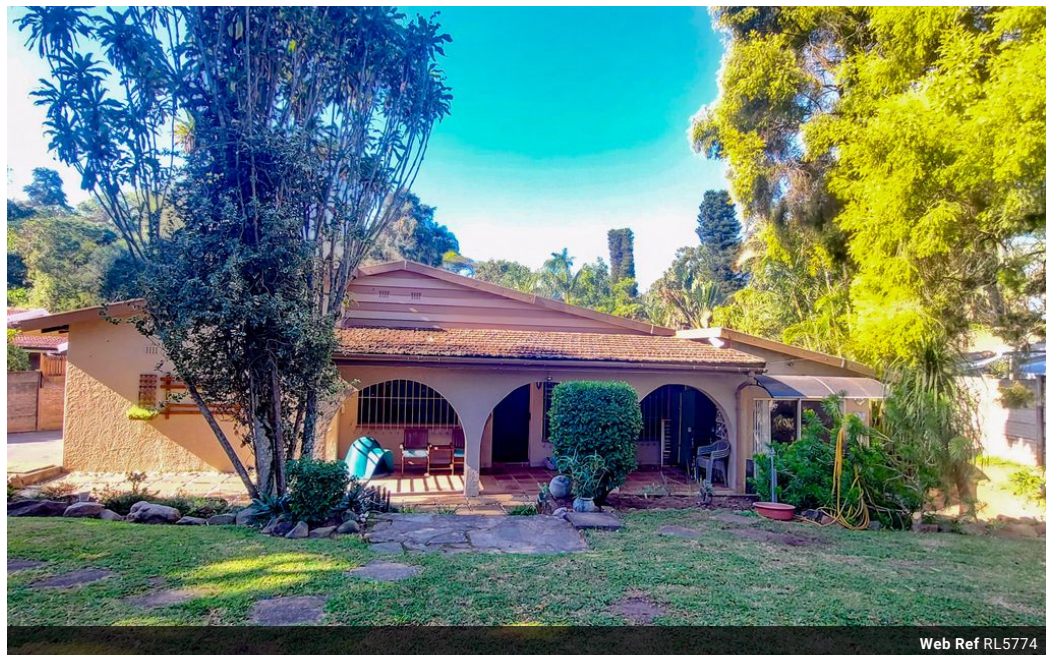


Sibusiso Dlamini
0762032030
sibusiso@ingwe.co.za

Contact Head Office

031 701 9898


34 Glenugie Road
Pinetown
3610



Web Ref RL5774



R1,785,000

 4  2.5

Monthly Bond Repayment R18,121.84

Calculated over 20 years at 10.75% with no deposit.

Transfer Costs R60,139.00 **Bond Costs** R30,875.00

These calculations are only a guide. Please ask your conveyancer for exact calculations.

Monthly Rates R1,765

4-Bedroom Family Retreat with Pool & Entertainment Area in Tranquil Farningham Ridge

Tucked away in a quiet cul-de-sac in the heart of the leafy suburb of Farningham Ridge, this lovely and spacious family home offers you the perfect balance between comfort, convenience, and charm.

As you enter through the secure access gate, you're welcomed by a sense of peace and privacy. The manicured garden, dotted with fruit trees—litchi, lemon, avo, and mango—immediately creates a sense of home. There's ample space for your children to play, your pets to run free, or simply for you to unwind in the embrace of nature.

Step into a warm and inviting interior that opens up into a generous lounge with built-in bar—perfect for entertaining guests or enjoying cozy evenings. Air conditioning in the lounge and two of the bedrooms ensures year-round comfort. The separate dining room leads into a well-designed kitchen complete with...

Features

| | | | |
|---------------------|-----|---------------------|---------------------|
| Pets Allowed | Yes | | |
| Interior | | Exterior | |
| Bedrooms | 4 | Carports / Parkings | 2 |
| Bathrooms | 2.5 | Security | Yes |
| Kitchens | 1 | Pool | Yes |
| Recep. Rooms | 2 | Views | True |
| Furnished | No | | |
| | | Sizes | |
| | | Floor Size | 237m ² |
| | | Land Size | 1,178m ² |

