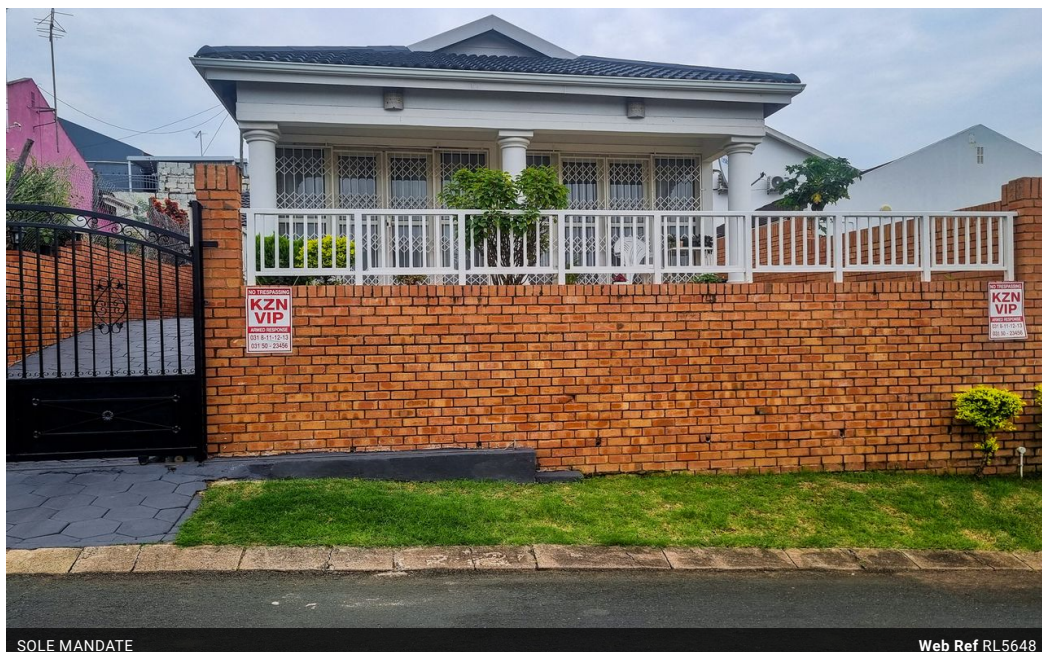


Valerie Naidoo
084 507 3082
valerie@ingwe.co.za

Contact Umhlanga

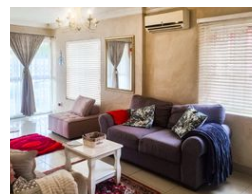
031 7019898

Ridge 6
20 Ncondo Place
Umhlanga Ridge
Umhlanga



SOLE MANDATE

Web Ref RL5648



R1,585,000

3 2 1

Monthly Bond Repayment R16,091.38

Calculated over 20 years at 10.75% with no deposit.

Transfer Costs R48,335.00 **Bond Costs** R28,990.00

These calculations are only a guide. Please ask your conveyancer for exact calculations.

Monthly Rates R1,250

NEW SOLE MANDATE! - Ideal Family Home for new beginners!

Ready to move in and enjoy the comfort this home offers! Beautifully presented, spacious and well maintained, free standing family Home consisting of 3 bedrooms, 2 bathrooms and a single garage in a quite Suburb of Woodview.

Boasting a land size of 290sqm, above road level, there is a well kept garden with a porch, paved yard with ample parking for 4 cars. It is fully renovated with two extensions on the property. The lounge and TV room with separate dining room for seating approximately 8-10 guests with an aluminium windows and a sliding door that walks out into the Patio area.

The kitchen which is fully fitted with a modern design of cupboards, Granite tops, stove and oven and serves as the heart of the home, where delicious meals can be prepared. A Separate door from kitchen leads to the side of the house - ideal for...

Features

Pets Allowed	Yes		
Interior		Exterior	Sizes
Bedrooms	3	Garages	Land Size
Bathrooms	2	Carports / Parkings	290m²
Kitchens	1	Security	
Recep. Rooms	2	Pool	
Studies	1	Views	
Furnished	No		