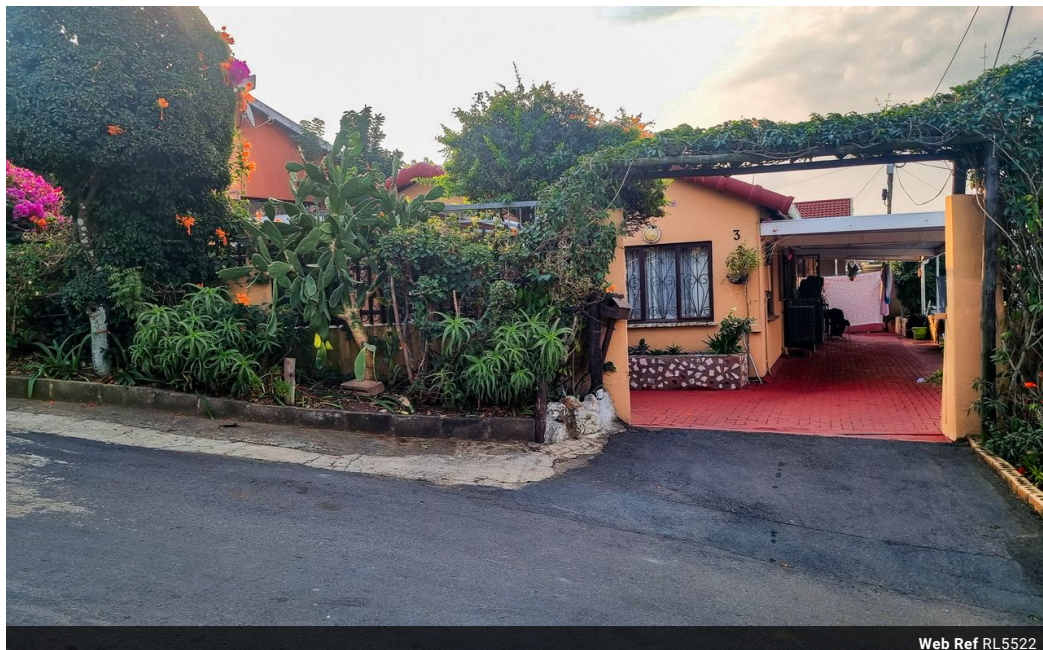




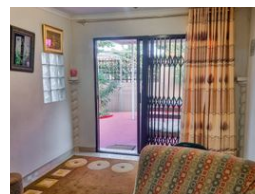
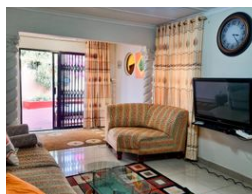
**Valerie Naidoo**  
084 507 3082  
valerie@ingwe.co.za

Contact Umhlanga  
**031 7019898**


Ridge 6  
20 Ncondo Place  
Umhlanga Ridge  
Umhlanga



Web Ref RL5522



**R1,495,000**

 3  2

**Monthly Bond Repayment** R15,177.67

Calculated over 20 years at 10.75% with no deposit.

**Transfer Costs** R45,635.00 **Bond Costs** R28,990.00

These calculations are only a guide. Please ask your conveyancer for exact calculations.

**Monthly Rates** R700

Looking for something step-less in a great location, secure and friendly! Then this property is just

The Ingwe Property Group presents this amazing family home situated in the heart of Woodview, which has many amazing benefits. Nestled on a prime location and central to all amenities this charming house sits on 275sqm of land, fully fenced around the property. Main entrance has automated gates for added security and convenience.

This comfortable home, free-standing 3-bedroom house offers a delightful blend of comfort and convenience. Step inside to find a tastefully designed lounge, dining room and fully fitted kitchen with granite tops with ample space to work around making it a chef's dream come true. A private pantry cupboard to tuck away all those groceries ample cupboard for your dishes and cutlery

All bedrooms come with modern designed built-in cupboards and the master bedroom features a luxurious en-suite, adding a...

## Features

|                     |     |                     |              |
|---------------------|-----|---------------------|--------------|
| <b>Pets Allowed</b> | Yes |                     |              |
| <b>Interior</b>     |     | <b>Exterior</b>     | <b>Sizes</b> |
| Bedrooms            | 3   | Carports / Parkings | 4            |
| Bathrooms           | 2   | Security            | Yes          |
| Kitchens            | 1   | Pool                | No           |
| Recep. Rooms        | 2   | Views               | True         |
| Furnished           | No  |                     |              |
|                     |     |                     | Land Size    |
|                     |     |                     | 275m²        |