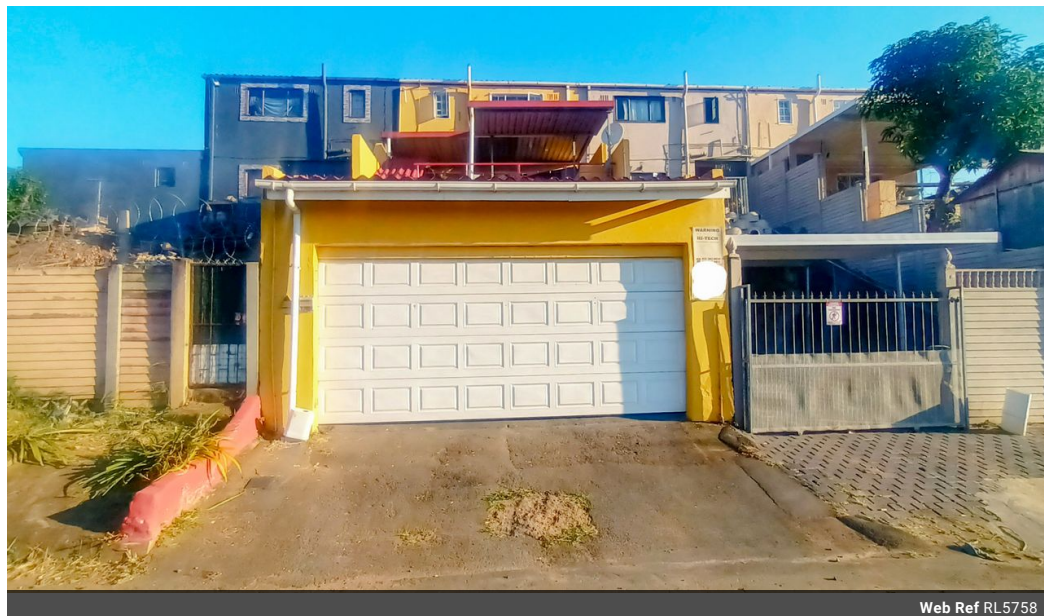




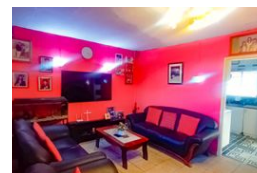
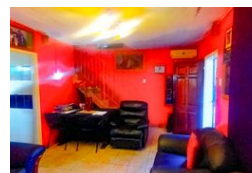
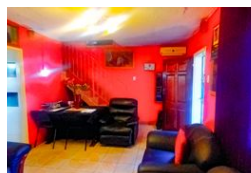
Sugan Naidu
071 167 4113
sugan@ingwe.co.za

Contact Umhlanga
031 7019898

Ridge 6
20 Ncondo Place
Umhlanga Ridge
Umhlanga



Web Ref RL5758



R899,000

 3  1

Monthly Bond Repayment R8,975.44

Calculated over 20 years at 10.5% with no deposit.

Transfer Costs R28,334.00 **Bond Costs** R21,450.00

These calculations are only a guide. Please ask your conveyancer for exact calculations.

Monthly Rates R750

A home with a unique taste

This impeccably maintained, move-in ready home is situated in the peaceful and secure Whetstone suburb, just a short commute from the Whetstone Library, Phoenix Plaza, schools, clinic, and all major amenities.

This stunning double-storey property offers an ideal blend of comfort, style, and convenience. The fully fitted kitchen flows effortlessly into a spacious, cozy lounge—perfect for both family gatherings and entertaining guests. The home features three generously sized bedrooms, each equipped with built-in cupboards, and two well-appointed bathrooms, both with showers.

To ensure year-round comfort, four air conditioning units are strategically placed throughout the home, keeping you cool during the warmer months. The entire property is fully walled for privacy and security, with double carports and automated garage...

Features

Pets Allowed		Yes			
Interior				Exterior	
Bedrooms	3			Security	No
Bathrooms	1			Pool	No
Kitchens	1			Views	False
Recep. Rooms	2				
Furnished	No				
				Sizes	
				Floor Size	90m ²
				Land Size	131m ²

