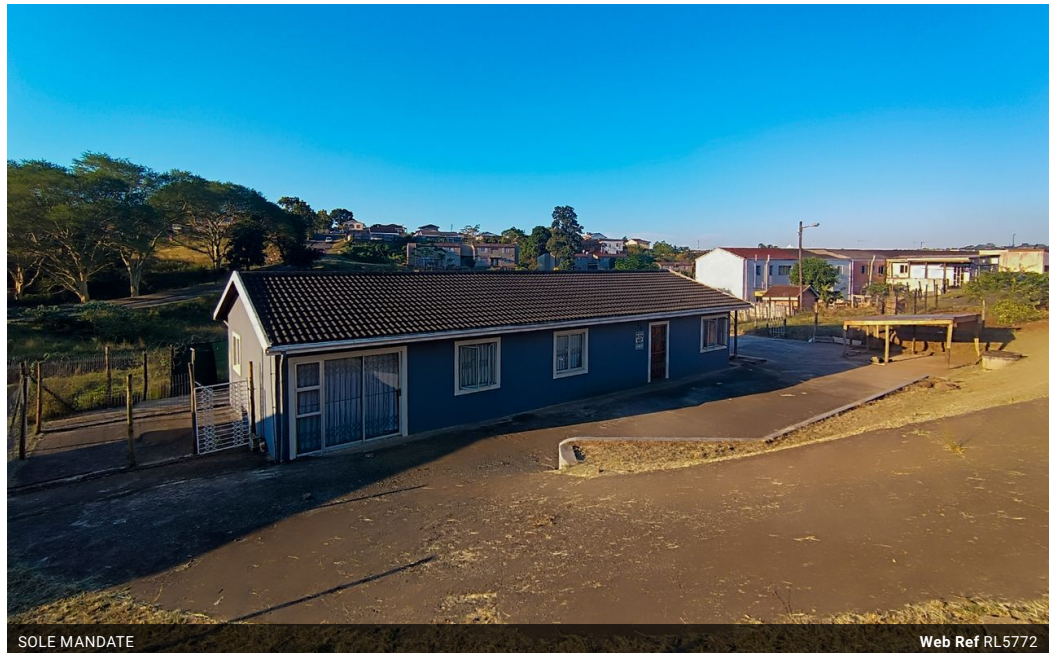




Bradley Pandaram
072 723 4794
bradley@ingwe.co.za

Contact Umhlanga
031 7019898

Ridge 6
20 Ncondo Place
Umhlanga Ridge
Umhlanga




SOLE MANDATE

Web Ref RL5772



R1,250,000

 3  2

Monthly Bond Repayment R12,479.75

Calculated over 20 years at 10.5% with no deposit.

Transfer Costs R36,219.00 **Bond Costs** R27,105.00

These calculations are only a guide. Please ask your conveyancer for exact calculations.

Monthly Rates R770

Versatile 3 Bedroom Home with Modern Finishes and Exceptional Business Potential

Set on a generous 717sqm stand in the heart of Whetstone, Phoenix, this beautifully maintained 3-bedroom, 2-bathroom freestanding home offers a unique blend of modern comfort, privacy, and exceptional potential for a home-based business or investment opportunity.

From the moment you arrive, you'll appreciate the ease of access thanks to two separate entrances—ideal for accommodating trucks, additional parking, or client access. The bonus? An adjoining adopted land area of approximately 1000sqm, giving you even more room to expand, develop, or simply enjoy wide-open space that's a rare find in this area.

Inside, the home showcases modern finishes throughout—from a sleek, contemporary kitchen with glossy cabinetry and clean lines, to tiled open-plan living and dining spaces that offer a warm, welcoming atmosphere. The 3...

Features

Pets Allowed		Yes	
Interior		Exterior	
Bedrooms	3	Carports / Parkings	50
Bathrooms	2	Security	Yes
Kitchens	1	Pool	No
Recep. Rooms	2	Views	True
Furnished	Yes		
		Sizes	
		Floor Size	110m ²
		Land Size	717m ²