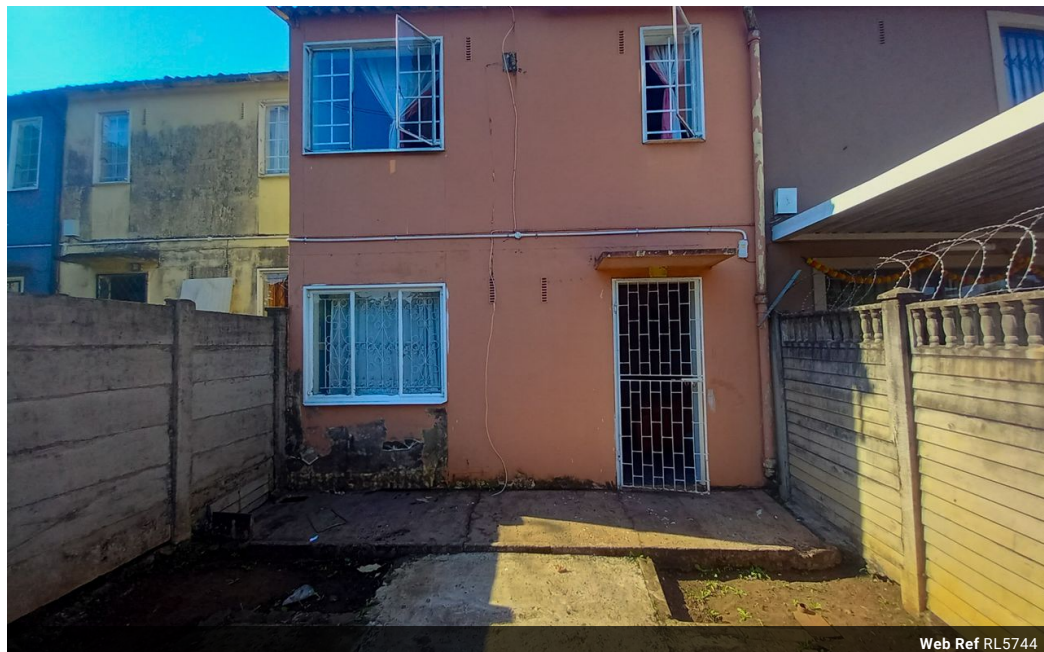




Kemuel Marcus
067 045 0431
kemuel@ingwe.co.za

Contact Umhlanga
031 7019898

Ridge 6
20 Ncondo Place
Umhlanga Ridge
Umhlanga



Web Ref RL5744



R699,000

2 1

Monthly Bond Repayment R7,096.45

Calculated over 20 years at 10.75% with no deposit.

Transfer Costs R23,730.00 **Bond Costs** R17,680.00

These calculations are only a guide. Please ask your conveyancer for exact calculations.

Monthly Rates R655

Two bedroom home in prime location

Welcome to this well-maintained 2-bedroom home situated in a highly sought-after area, just minutes from Mount Edgecombe Hospital and Mahatma Gandhi Memorial Hospital. Perfectly suited for small families, professionals, or savvy investors, this home offers both comfort and convenience in one of the region's most accessible locations.

The home contains :
Two spacious rooms
Family bathroom
Kitchen
Spacious lounge
Parking for three vehicles

Whether you're looking for a cozy residence or a strategically located investment, this property ticks all the boxes. Close to key amenities, major transport routes, and medical facilities, it's an opportunity not to be missed.

Call today for a viewing.

Features

Pets Allowed	Yes			
Interior		Exterior		Sizes
Bedrooms	2	Carports / Parkings	1	Land Size
Bathrooms	1	Security	No	134m²
Kitchens	1	Pool	No	
Recep. Rooms	1	Views	True	
Furnished	No			

