

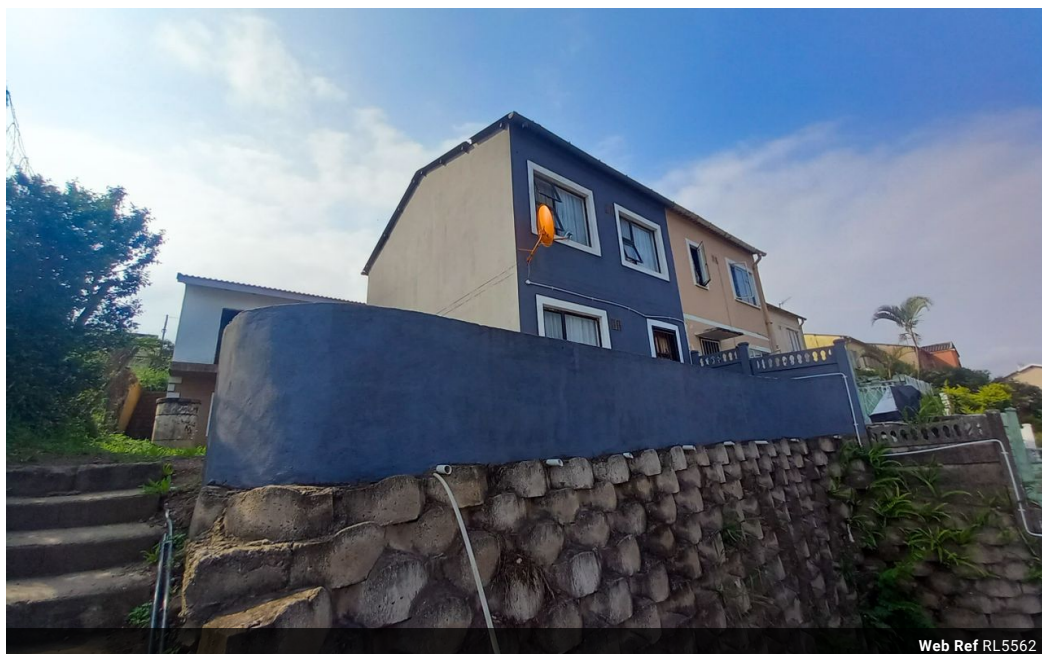


Kemuel Marcus
067 045 0431
kemuel@ingwe.co.za

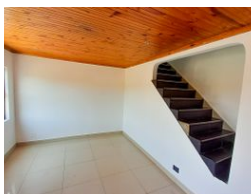
Contact Umhlanga

031 7019898

Ridge 6
20 Ncondo Place
Umhlanga Ridge
Umhlanga



Web Ref RL5562



R950,000

🛏 2 🚿 1

Monthly Bond Repayment R9,644.68

Calculated over 20 years at 10.75% with no deposit.

Transfer Costs R30,412.00 **Bond Costs** R23,335.00

These calculations are only a guide. Please ask your conveyancer for exact calculations.

Monthly Rates R572

Income generating opportunity

This 2-bedroom corner property offers a fantastic opportunity for comfortable living with plenty of space and potential. Located in a quiet, sought-after neighborhood, this home features generously sized rooms.

The fitted kitchen is both functional and stylish, with modern appliances and ample storage space, making it perfect for preparing meals and entertaining guests.

The spacious lounge provides a relaxing area for unwinding after a long day, with plenty of room for both living and dining arrangements.

In addition to the cozy interiors, this property comes with two outbuildings, offering additional storage space or the potential for a home office, or to generate an income, whatever suits your needs.

The corner location provides added privacy and more outdoor space, perfect for gardening or enjoying the outdoors.

With...

Features

Pets Allowed		Yes			
Interior				Exterior	
Bedrooms	2			Carports / Parkings	2
Bathrooms	1			Security	No
Kitchens	1			Pool	No
Recep. Rooms	1			Views	True
Furnished	No				
				Sizes	
				Land Size	259m²