



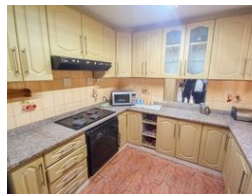
Kemuel Marcus
067 045 0431
kemuel@ingwe.co.za

Contact Umhlanga
031 7019898

Ridge 6
20 Ncondo Place
Umhlanga Ridge
Umhlanga



Web Ref RL5698



R925,000

3 2

Monthly Bond Repayment R9,390.87

Calculated over 20 years at 10.75% with no deposit.

Transfer Costs R30,412.00 **Bond Costs** R23,335.00

These calculations are only a guide. Please ask your conveyancer for exact calculations.

Monthly Rates R645

Versatile Home with Business Potential

This spacious three-bedroom, two-bathroom home offers exceptional versatility for both residential living and business opportunities. Ideally situated on a main road, it presents excellent visibility and accessibility—perfect for those seeking a home with commercial potential.

Inside, you'll find a fully fitted kitchen, a generously sized open plan lounge dining area designed for comfort and easy living. The home is equipped with a reliable alarm system, offering added peace of mind.

With carport parking for multiple vehicles and easy access for clients or guests, this property is a rare find for those looking to live and work in one convenient location.

Call today for a viewing

Features

Pets Allowed	Yes			
Interior		Exterior		Sizes
Bedrooms	3	Carports / Parkings	1	Land Size
Bathrooms	2	Security	Yes	291m²
Kitchens	1	Pool	No	
Recep. Rooms	1	Views	True	
Furnished	No			

