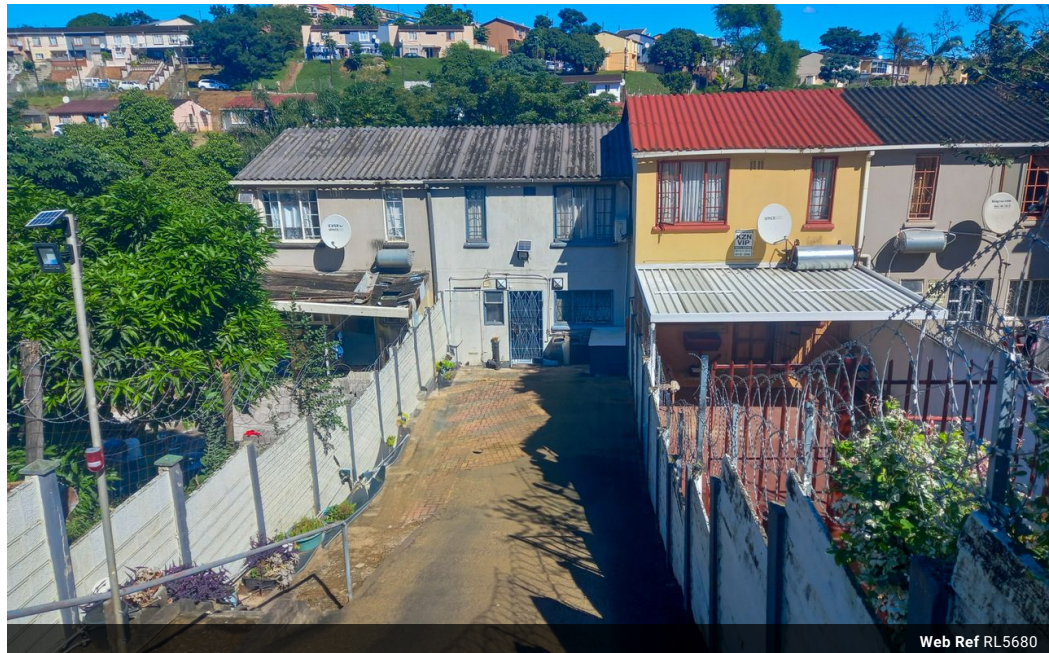




**Kemuel Marcus**  
067 045 0431  
kemuel@ingwe.co.za

Contact Umhlanga  
**031 7019898**

Ridge 6  
20 Ncondo Place  
Umhlanga Ridge  
Umhlanga



Web Ref RL5680



## R660,000

2 1

**Monthly Bond Repayment** R6,700.51

Calculated over 20 years at 10.75% with no deposit.

**Transfer Costs** R23,730.00 **Bond Costs** R17,680.00

These calculations are only a guide. Please ask your conveyancer for exact calculations.

**Monthly Rates** R542

### Main road opportunity

This versatile two bedroom home offers the perfect blend of comfort and opportunity. Featuring a full family bathroom, a fully fitted kitchen, and ample storage throughout, it's designed for convenient living. Three air conditioners ensure year-round comfort, while the layout suits both a private residence and a thriving home-based business.

Located on a main road with excellent visibility and access, this home presents a prime opportunity for entrepreneurs or anyone seeking a central, well-connected spot. Whether you're looking to settle in or invest in a strategic business location, this property delivers.

Don't miss out—schedule a viewing today!

### Features

<b>Pets Allowed</b>	Yes		
<b>Interior</b>		<b>Exterior</b>	<b>Sizes</b>
Bedrooms	2	Carports / Parkings	3
Bathrooms	1	Security	Yes
Kitchens	1	Pool	No
Recep. Rooms	1	Views	True
Furnished	No		
			Land Size
			147m²

