

**Valerie Naidoo**  
 084 507 3082  
 valerie@ingwe.co.za

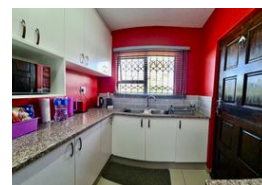
Contact Umhlanga  
 031 7019898

Ridge 6  
 20 Ncondo Place  
 Umhlanga Ridge  
 Umhlanga

## 2 Bedroom Townhouse For Sale in Grove End



Web Ref RL5126



**R850,000**

2 Bedrooms 1 Bathroom

**Monthly Bond Repayment** R8,629.45

Calculated over 20 years at 10.75% with no deposit.

**Transfer Costs** R28,244.00 **Bond Costs** R21,450.00

These calculations are only a guide. Please ask your conveyancer for exact calculations.

**Monthly Levy** R1,200 **Monthly Rates** R650

Comfort and security for your family.

The Ingwe Property Group presents a 2 Bedroom Apartment in Grove End.

If you looking for comfort, security and an ideal home if you are starting a family, then ,this home is just for you!

Well secured and situated on the ground floor and easy for access – this two bedroom and bathroom with kitchen and lounge boasts two entrances with ample space for parking in front and at the back a neat garden area for entertainment or relaxing on those summer days.

Porcelain tiles throughout the house, modern style bathroom and kitchen with granite tops.

Ideally located near schools, shopping malls and KSIA.

Call me today for your private viewing. We do assist with bond applications and pre-qualifications.

### Features

<b>Pets Allowed</b>	Yes		
<b>Interior</b>		<b>Exterior</b>	
Bedrooms	2	Security	Yes
Bathrooms	1	Pool	No
Kitchens	1	Views	True
Recep. Rooms	1		
Furnished	No		

