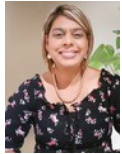




Kemuel Marcus
067 045 0431
kemuel@ingwe.co.za



Valerie Naidoo
084 507 3082
valerie@ingwe.co.za

Contact Umhlanga

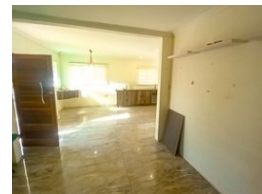
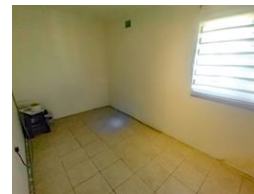
031 7019898

Ridge 6
20 Ncondo Place
Umhlanga Ridge
Umhlanga


NEW



Web Ref RL5747



R795,000

 4  2

Monthly Bond Repayment R8,071.07

Calculated over 20 years at 10.75% with no deposit.

Transfer Costs R25,898.00 **Bond Costs** R19,565.00

These calculations are only a guide. Please ask your conveyancer for exact calculations.

Monthly Rates R980

Freestanding Home in the heart of Brookdale

This Freestanding Home is situated in Brookdale and is ideal for the growing family who will love and appreciate a home that offers versatile and open plan living.

The home contains :
Four bedrooms with cupboards
Spacious open plan lounge and dining area
Kitchen fitted with cupboards
Full family bathroom and guest toilet

Carport on the outside which can be used to park multiple vehicles underneath.

This home is a situated close to major amenities and public schools as well as close access to public transport.

Call today for a viewing.

Features

Pets Allowed	Yes		
Interior		Exterior	
Bedrooms	4	Carports / Parkings	1
Bathrooms	2	Security	No
Kitchens	1	Pool	No
Recep. Rooms	1	Views	True
Furnished	No		
		Sizes	
		Land Size	269m ²

