



Valerie Naidoo
084 507 3082
valerie@ingwe.co.za



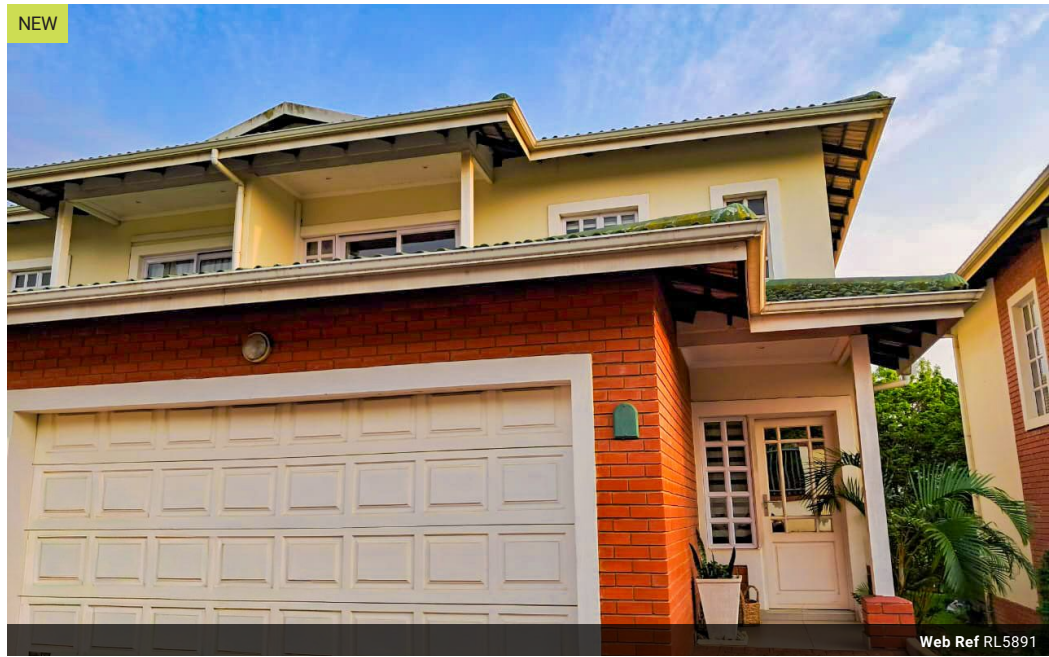
Babitha Roopnarian
082 359 3791
babitha@ingwe.co.za

Contact Umhlanga

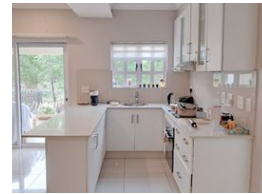
031 7019898

Ridge 6
20 Ncondo Place
Umhlanga Ridge
Umhlanga

NEW



Web Ref RL5891



R2,795,000

3 2 2

Monthly Bond Repayment R27,904.72

Calculated over 20 years at 10.5% with no deposit.

Transfer Costs R141,628.00 **Bond Costs** R40,300.00

These calculations are only a guide. Please ask your conveyancer for exact calculations.

Monthly Levy R4,000 **Monthly Rates** R2,860

Looking for a Perfect Lock Up & Go or Starter Home for the family!

The Ingwe Property Group presents this amazingly good home that can be your next! The lifestyle you deserve - on this property is perfectly situated on the estate of Mount Edgemount in Broadlands.

This home offers three spacious bedrooms with two bathrooms one being an ensuite, offering ample space for your family or guests to unwind and relax.

Experience seamless living with an open plan design that effortlessly connects the living, dining, and fully fitted kitchen and open plan lounge and dining. Creating an inviting space for gatherings and quality time with loved ones. Modern designed kitchen with granite tops oven and stove.

The rooms are well sized with ample cupboard space and the main bedroom has an ensuite and the general bath is shared by the rest of the rooms.

The balcony is well spaced for outdoor furniture...

Features

Pets Allowed Yes

Interior
Bedrooms 3
Bathrooms 2
Kitchens 1
Recep. Rooms 2
Studies 1
Furnished No

Exterior
Garages 2
Security Yes
Pool Yes
Views True

Sizes
Floor Size 178m²
Land Size 105,779m²