

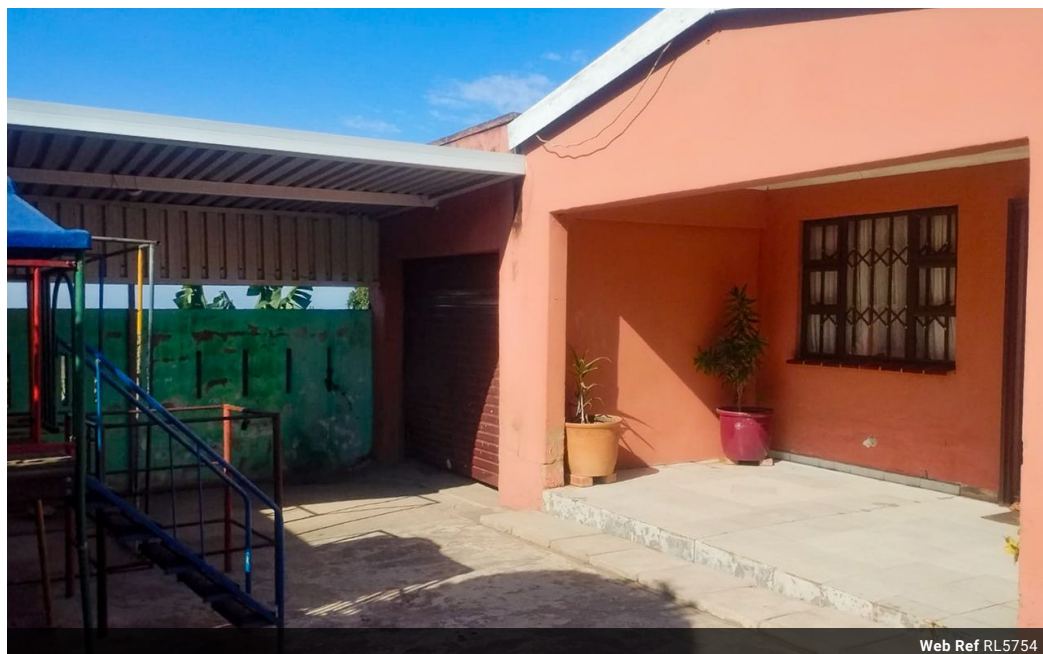


**Sibongile Madlala**  
0623914228  
sibongile@ingwe.co.za

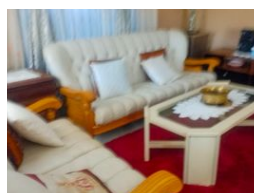
Contact Head Office

031 701 9898

34 Glenugie Road  
Pinetown  
3610



Web Ref RL5754



**R820,000**

2 1 1

**Monthly Bond Repayment** R8,324.88

Calculated over 20 years at 10.75% with no deposit.

**Transfer Costs** R28,244.00 **Bond Costs** R21,450.00

These calculations are only a guide. Please ask your conveyancer for exact calculations.

**Monthly Rates** R380

## Residential- income generating income Newtown A

4 Bedroom House in Inanda Newtown A

Residential- income generating income

Invest in your future with our rental income property. This house is situated in Newtown A offers a fantastic opportunity to generate income and build equity.

4 Bedrooms, family bathroom separated guest + shower, hand wash basin, ensuite in the master bedroom.

Open plan lounge and Dining room, fully tiled throughout  
2x Cottages, Tandem double parking and a storage room, The property is fully fenced and has an automated gate, ample yard.

The 2 outdoor rooms offering versatility for extended family, rental income or workplace.

Whether you are seeking a family home or a savvy investment opportunity. This property combines practically with strategic positioning.

## Features

**Pets Allowed** Yes

### Interior

Bedrooms	2
Bathrooms	1
Kitchens	1
Recep. Rooms	2
Furnished	No

### Exterior

Garages	1
Carports / Parkings	1
Security	Yes
Pool	No
Views	False

