

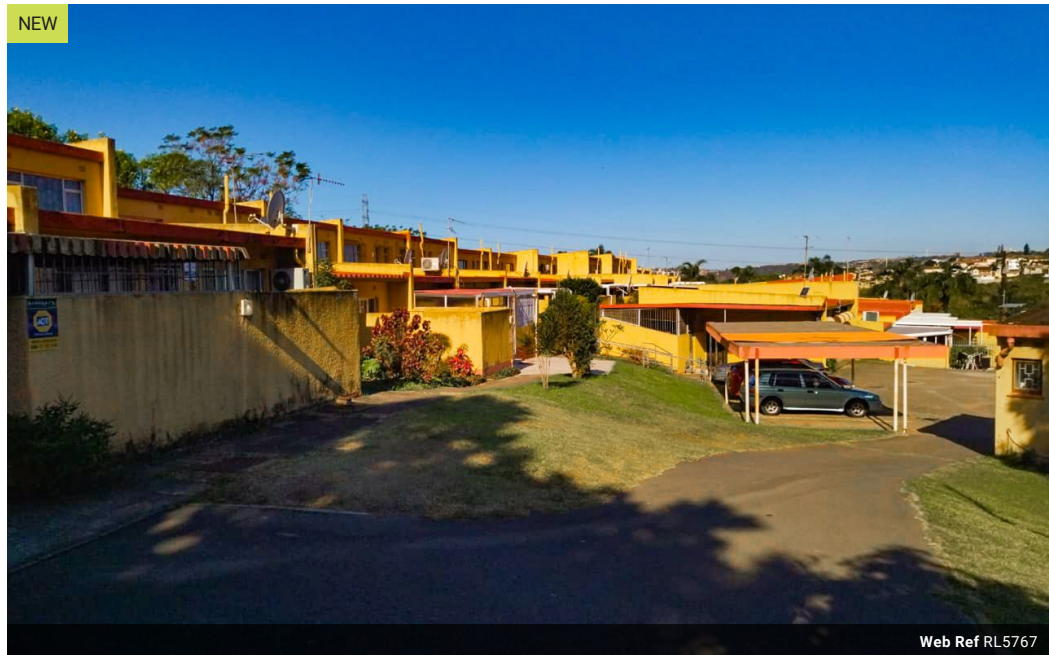


Sibongile Madlala
0623914228
sibongile@ingwe.co.za

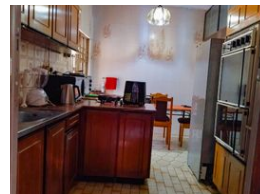
Contact Head Office
031 701 9898

34 Glenugie Road
Pinetown
3610

NEW



Web Ref RL5767



R1,500,000

 3  1.5

Monthly Bond Repayment R14,975.70

Calculated over 20 years at 10.5% with no deposit.

Transfer Costs R45,887.00 **Bond Costs** R28,990.00

These calculations are only a guide. Please ask your conveyancer for exact calculations.

Monthly Levy R1,500

Stunning Three Bedroom corner apartment

This charming corner apartment offers the perfect blend of space, security, and potential – ideal for families, single parents, or savvy investors.

3 Spacious Bedrooms
(Main bedroom includes built-in cupboards)

Family Bathroom + Separate Toilet
Perfect for busy mornings

Open Plan Living & Dining Area
A warm, inviting space for family life and entertaining

Fully Fitted Kitchen
Includes eye-level oven and enclosed scullery for added convenience

Corner Unit with Extra Outdoor Space
Plenty of room for future extension or renovations

Features

Interior

| | |
|--------------|-----|
| Bedrooms | 3 |
| Bathrooms | 1.5 |
| Kitchens | 1 |
| Recep. Rooms | 2 |
| Furnished | No |

Exterior

| | |
|---------------------|-------|
| Carports / Parkings | 1 |
| Security | Yes |
| Pool | No |
| Views | False |

Sizes

| | |
|------------|------------------|
| Floor Size | 89m ² |
|------------|------------------|

