

**Valerie Naidoo**  
084 507 3082  
valerie@ingwe.co.za

Contact Umhlanga

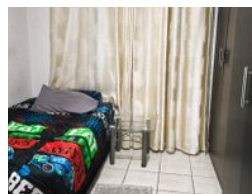
031 7019898

Ridge 6  
20 Ncondo Place  
Umhlanga Ridge  
Umhlanga

NEW



Web Ref RL5817



**R630,000**

 2  1

**Monthly Bond Repayment** R6,395.94

Calculated over 20 years at 10.75% with no deposit.

**Transfer Costs** R23,730.00 **Bond Costs** R17,680.00

These calculations are only a guide. Please ask your conveyancer for exact calculations.

**Monthly Levy** R1,100 **Monthly Rates** R551

**LOCK UP and GO!**

A Great Investment Opportunity or Family Home for new beginners.

The Ingwe Property Group presents this amazing ground Flat unit in a block of flats on Cupido Gardens that Ideally situated in the heart of the community of Woodhurst in Chatsworth with 2 bedrooms and bath, lounge and kitchen that is ideally for new beginners that are starting up life and want to be independent.

The flat is fully tiled with Kitchen units and rooms have built-in-cupboards. The bathroom has a tub and a shower.

Close to local schools and shopping malls. Give us a call today to view and this could be your next new home! We can pre-qualify you in 48hrs of submission of all information. Let us make this Happen and your dreams become a reality.

## Features

### Interior

Bedrooms	2
Bathrooms	1
Kitchens	1
Recep. Rooms	1
Furnished	No

### Exterior

Security	Yes
Pool	No
Views	True

### Sizes

Floor Size	66m <sup>2</sup>
Land Size	11,392m <sup>2</sup>